

Offshore Solution Package

FPSO

**Automation**  
ICSS / ESD / F&G / PMS

**Power System**  
High Voltage (up to 17.5kV) Switchboard  
Low Voltage (up to 690V) Switchboard



Semi-Rig

**Automation**  
ICSS / ESD / F&G / PMS

**Power System**  
High Voltage (up to 17.5kV) Switchboard  
Low Voltage (up to 690V) Switchboard



Drillship

**Automation**  
IAS / ESD / F&G / PMS

**Power System**  
High Voltage (up to 17.5kV) Switchboard  
Low Voltage (up to 690V) Switchboard

**Ballast Water Management System**



Ro-PAX & Cruise

**Automation**  
IAS / ESD / F&G / PMS

**Power System**  
High Voltage (up to 17.5kV) Switchboard  
Low Voltage (up to 690V) Switchboard

**Ballast Water Management System**



Global Network



ASIA		USA	
KOREA	S&SYS Co.,Ltd. (HQ)	USA	MarineBCTec(LA)
KOREA	STK Engineering Co.,Ltd.	USA	MarineBCTec(NJ)
KOREA	JEWON Engineering Co.,Ltd.	USA	MarineBCTec(Houston, TX)
KOREA	STA	OCEANIA	
KOREA	UNI-ON Co.,Ltd.	Australia	UNI-ON Co.,Ltd.
CHINA	Seven Seas Electronic Co.,Ltd.(Shanghai)	SOUTH AMERICA	
CHINA	Seven Seas Electronic Co.,Ltd.(Qingdao)	BRAZIL	METALOCK Brazil Ltd.
CHINA	Seven Seas Electronic Co.,Ltd.(Dalian)	BRAZIL	DZETA Serviços Empresariais Eireli
CHINA	SAMSUN Marine Technology(HK) Co.,Ltd.	EUROPE	
CHINA	Health Lead Development Co.,Ltd.	U.K.	MJR Controls Ltd.
CHINA	SJ Engineering Co.,Ltd	ITALY	MASTER CONTROLS
INDIA	Indostan Corporation	GREECE	D.C.S.I Ltd.
INDIA	Navicom technology	GREECE	INFOMARINE
JAPAN	Orient Marine Co.,Ltd.	TURKEY	Oceanist
JAPAN	SHIN-EI ELECTRIC Co.,Ltd.	AFRICA	
		SOUTH AFRICA	SMD Telecommunications (Pty) Ltd.
		Sales Agency	



S&SYS Co.,Ltd.    www.snsys.net		Sales Department	Service Department
<b>Hwaseong Office</b>	SK V1 center, 7F, 830, Dongtansunhwan-daero, Hwaseong-si, Gyeonggi-do, Republic of Korea(18468)	<b>TEL</b> +82-(0)31-229-1044	<b>TEL</b> +82-(0)31-229-1321
<b>Busan Factory</b>	51, Garisae 3-ro, Gangseo-gu, Busan, Republic of Korea(46727)	<b>FAX</b> +82-(0)31-229-1269	<b>FAX</b> +82-(0)31-229-1269
		<b>E-Mail</b> sales@snsys.net	<b>E-Mail</b> csas@snsys.net



PORTFOLIO OF MARINE & OFFSHORE SOLUTION

Growing into the world's best company





# GLOBAL LEADER IN MARINE & OFFSHORE SOLUTION WORLD'S BEST

S&SYS has been established as a spin off the Machinery & Electric system team of the Samsung Heavy Industries in 2017. Based on technologies and knowhow accumulated over 25 years in the shipbuilding and marine field, we have developed key equipment such as Ballast Water Management System(BWMS), Ship Automation System, Switchboard, Energy Storage System(ESS) and Fuel Gas Supply System(FGSS) for LNG/LPG fueled ships to clients all over the world.

In the future, S&SYS is expanding it's scope to Eco-friendly product business as well as Ballast Water Management System(BWMS), Ship Automation, Switchboard and plans to continuously provide more differentiated quality.

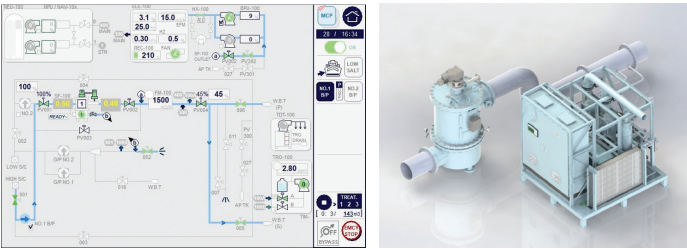


## Marine Solution Package

### Eco Solution

#### BWMS (Ballast Water Management System)

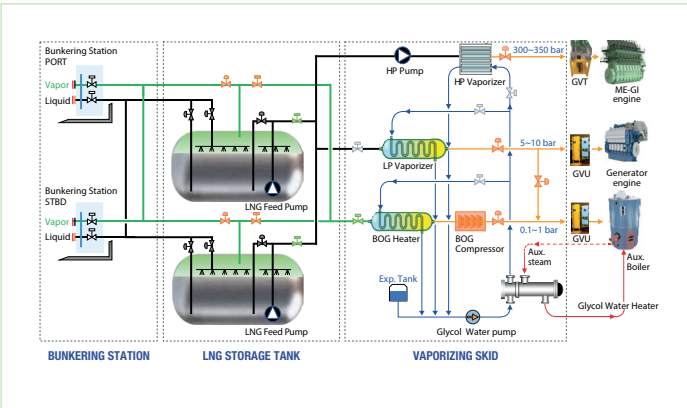
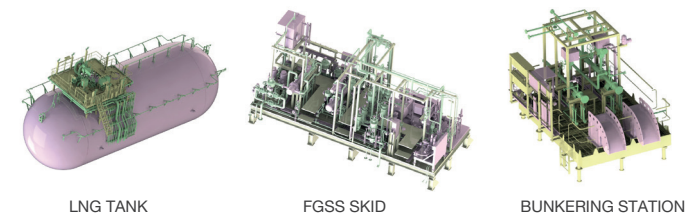
During ballasting, the ballast water management process is performed by Purimar™ comprises two main units operation: the mechanical separation and disinfection. During de-ballasting, a neutralization unit decrease the total residual oxidants(TRO) concentration.



- Space-saving design
- Non toxic by-products
- Anti-corrosion & Coating protection
- Cost saving

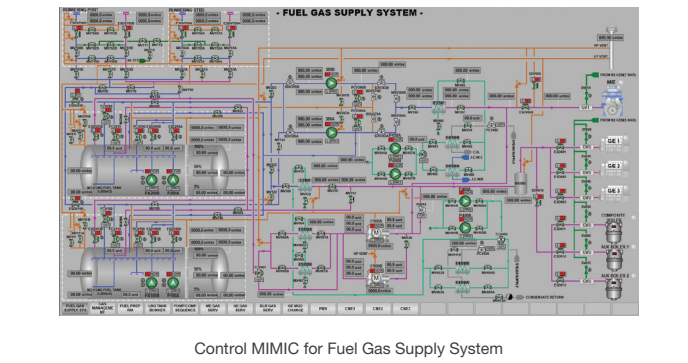
#### Fuel Gas Supply System (PURIGAS™-FGSS)

S&SYS had developed PURIGAS™ that is the package solution for all type of FGSS, and got AIP(Approval In Principle) for PURIGAS™ from LR. S&SYS can supply not only ME-GI FGSS, but also X-DF or DFDE FGSS, depends on the type of engine.



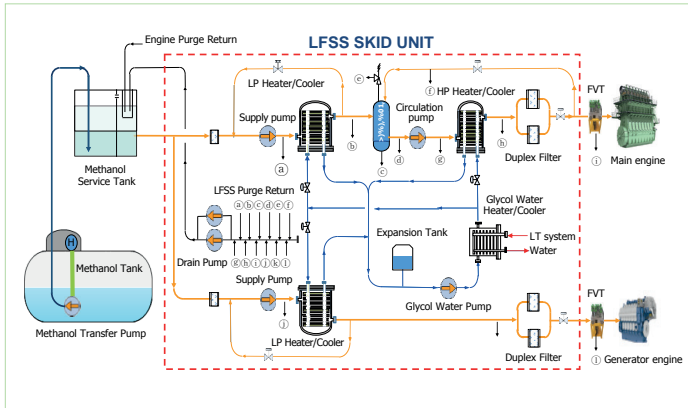
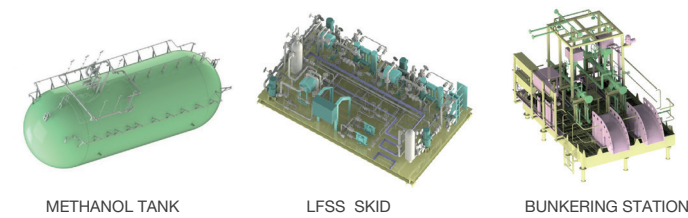
#### Gas Control (FGSS, LFSS, Regasification and Reliquefaction)

Based on plenty of experience for control system, SSAS-Master supplies robust and verified FGSS, LFSS, Regasification and Reliquefaction control performance with reasonable price. SSAS-Master can cover the control function for the high and low pressure FGSS with or without compressor solution. In addition, since experienced for both Direct type and In-direct type regasification control system, SSAS-Master is suitable for any kind of FGSS, LFSS, Regasification and Reliquefaction System.



#### Low-flashpoint Fuel Supply System (PURIGAS™-LFSS)

PURIGAS™-LFSS(Low-flashpoint Fuel Supply System) has been developed from the accumulated technology for METHANOL related equipment and engineering capability of S&SYS. Based on S&SYS's proven technology and know-how, PURIGAS™-LFSS will provide the most economical solution and the most reliable package system to our valuable customer with low CAPEX & OPEX in ME-LGIM engine.



### Automation Solution

#### SSAS-Master (IAS/ICMS/AMS)

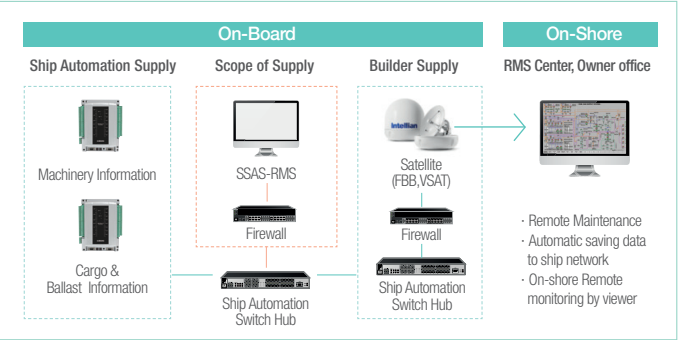
SSAS-Master meets the customer's needs with reliable, powerful and proven system performance, efficient operation and easy maintenance. SSAS-Master is so innovatively designed with redundant system from the high-level workstation to the low-level I/O Cards that has no trouble with monitoring and controlling any tiny disorder occurring. It is absolutely adjusted to all commercial vessels, especially dual fueled(LNG, LPG, Methanol etc.) vessels and LNG Carriers.



- Distributed control system with high reliability
- Quality approved system over 2,000 references in marine project
- Variable solutions with AMS, ICMS, IAS for all type vessels
- Remote monitoring and maintenance (Optional)
- Advanced technology for Gas Control (LNGC, FSRU, FGSS)

#### SSAS-RMS

SSAS-RMS is vessels remote monitoring & maintenance system from shore in real time including data transfer to shore. This system provide big data and owner can use the data in various ways for improvement of vessel's management. And remote maintenance function offer to owner qualified service without time loss for service engineer's embark.

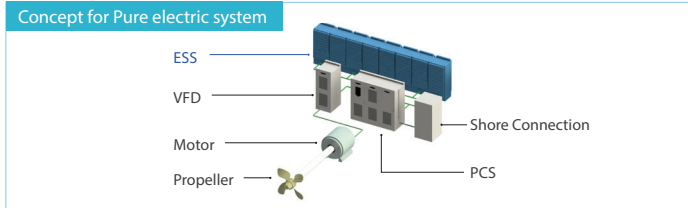
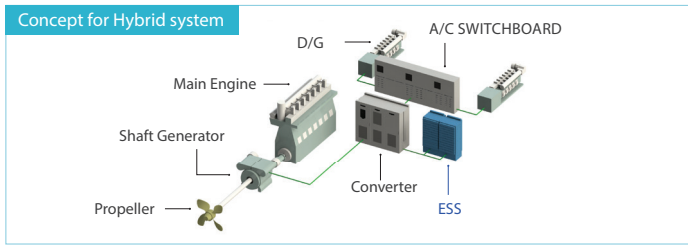


- Remotely check onboard system
- Update SSAS-Master software(program, graphic, tags, logic files)
- On-shore remote monitoring and data transfer to shore

### Power Solution

#### ESS (Energy Storage System)

Energy storage system is the solution that helps to use energy stored in Lithium-ion battery in the most efficient situation. Pure electric ships, 100% purely powered by the energy of ESS, allow the power of the charged ESS to be used as a main force in the motors that rotate the propellers. Hybrid electric ships using a part of energy from ESS, since it can use charged energy in ESS when ship reaches peak load, then the capacity of diesel generator sets can be decreased. and it leads to the fuel oil consumption savings and less maintenance costs.



#### High Voltage Switchboard

High voltage switchboard is specially designed and manufactured to meet the environmental, safety condition for the marine & offshore, and satisfied variable requirement of ship-owner.

- Optimized dimension (w:600mm)
- IR window
- Dual layer
- Top entry



- Achieved full type approval
- Independently arc-fault tested
- Tested in accordance with IEC Pub. 62271-200
- Metal clad construction (LSC2B and PM)

#### Low Voltage Switchboard

Low voltage switchboard(SSLV) has been supplying a full range of Low Voltage Switchboards for the marine electrical system with the advanced technology and experience. This Low voltage switchboard is specially developed for the marine applications. Besides providing enough working space, the compact design of this switchboard saves the installation space.

- Totally-enclosed, dead front, floor standing multi-cubicle type
- Compact lo voltage switchboard for power distribution
- Tested in accordance with IEC Pub. 61439
- World wide quality marine service

